

# MOX-DBFL SERIES



**MoxiE**  
INDUCTOR CORPORATION

## Low Temperature Cofired Ceramic Diplexer

### Features:

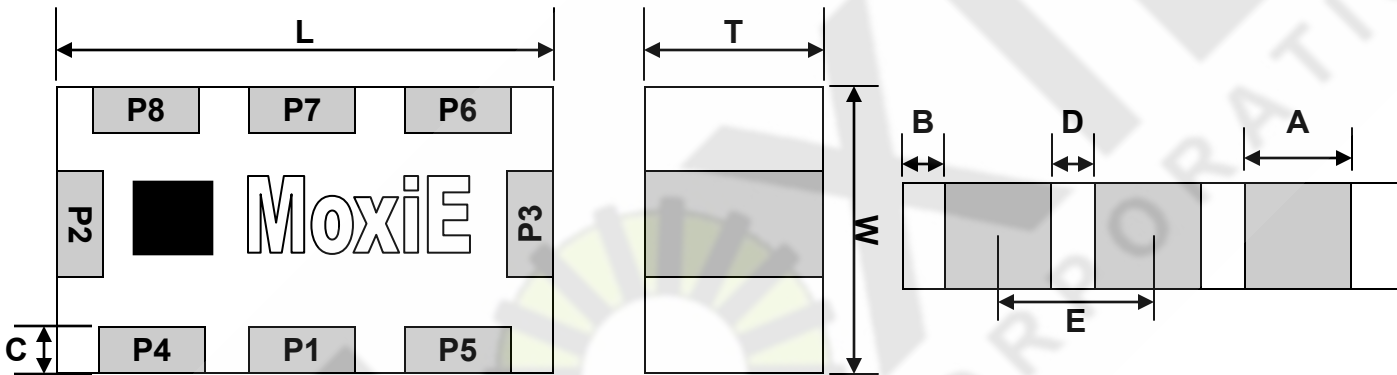
- Miniaturized design.
- Low insertion loss.
- Low Cost.
- RoHS Compliant.
- High rejection at lower stop band and 2nd harmonic band.

### Applications:

- 2.4 GHz ISM band WLAN & Bluetooth.



## MECHANICAL DIMENSIONS



MoxiE Part Number	L	W	T	A	B	C	D	E
MOX-DBFL-2012	2.0 ± 0.1	1.25 ± 0.1	0.7 ± 0.1	0.3 ± 0.1	0.2 ± 0.1	0.3 ± 0.1	0.35 ± 0.1	0.65 ± 0.1

ALL DIMENSIONS IN MM

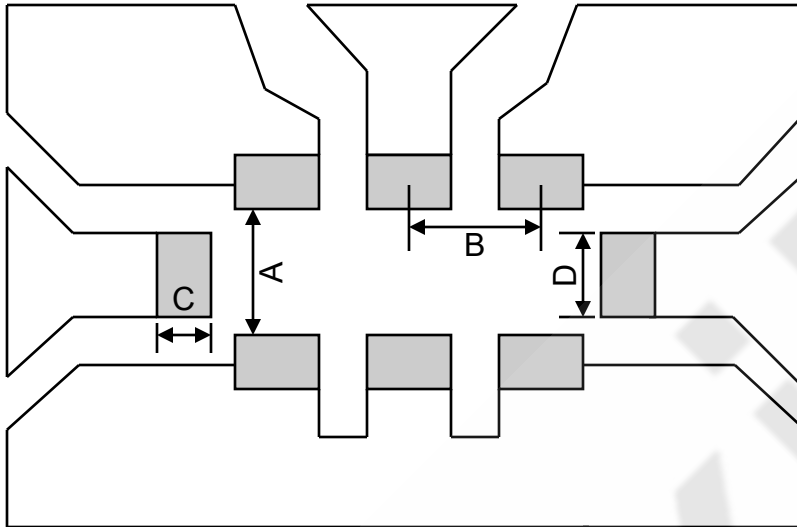
# MOX-DBFL SERIES



**MoxiE**  
INDUCTOR CORPORATION



## RECOMMENDED LANDING PATTERN



A	B	C	D
$0.8 \pm 0.1$	$0.65 \pm 0.1$	$0.35 \pm 0.1$	$0.65 \pm 0.1$



## ELECTRICAL SPECIFICATIONS

MoxiE Part Number	Pass Band (GHZ)	Bandwidth (MHz)	VSWR	IL (dB)	Attenuation
MOX-DBFL-2012	2.4 ~ 2.5	100	2	0.7	20dB Min @ 4.8 ~ 5.875 GHz 25dB Min @ 2.4 ~ 2.5 GHz
	4.9 ~ 5.875	975	2	0.9	



## MOX-DBFL-2012 ENGINEERING NOTES

- MoxiE test instruments: Agilent E5071B/N5230A vector network analyzer.
- Central frequency: 2455 = 2.45/5.50 GHz
- 2012 = 2.0mm\*1.25mm, Impedance: 50/50Ω
- Packaging: Tape & Reel (4000 pieces per reel)
- RoHS Compliant.
- MoxiE engineering specifications are subject to change without notice.