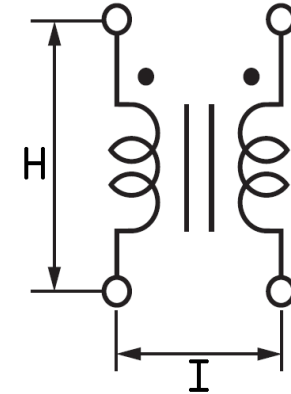
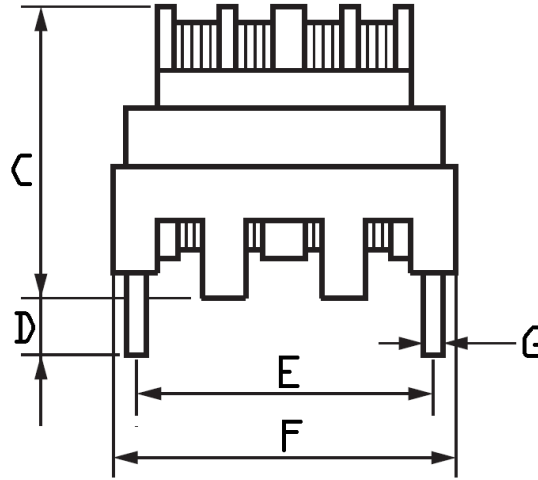
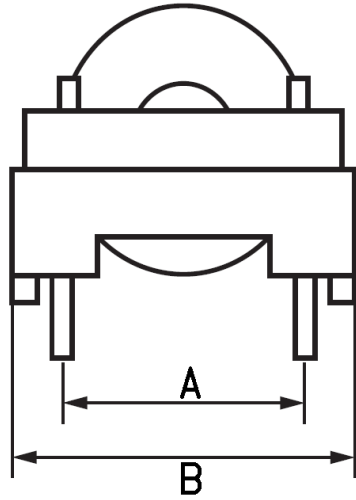


MECHANICAL (mm)



A	B	C	D	E	F	G	H	I
15.00±0.50	26.00 MAX.	21.00 MAX.	4.00±1.00	21.00±0.50	26.00 MAX.	0.80±0.10	15.00	21.00

MOXIE NOTES:

The following MoxiE Inductor Corporation Specification shall be considered Confidential in nature. Each person or persons in receipt of this specification shall not disclose any confidential information in whole or in part without written authorization from MoxiE Inductor Corporation.

- Rated voltage: 250V AC.
- Withstanding voltage: 2400VAC (2sec between lines).
- Insulation resistance: at 500VDC, more than 100M (between lines).
- Inductance tested at 1kHz, 1V.
- Packaging: Tray.
- RoHS Compliant.
- Moisture sensitivity: Level 1.
- RoHS "NL" peak solder rating: 245°C
- Operating temperature range: -40°C to +125°C.
- Storage temperature range: -40°C to +85°C.
- MoxiE Inductor Corporation custom designs are subject to United States copyright and/or patent protection(s).
- MoxiE Inductor Corporation specifications are subject to change without notice.
- Tolerances unless otherwise specified: 0-10=±0.15, 10-20=±0.20, 20-40=±0.25, 40-70=±0.30, ≥70=±0.40

MoxiE
INDUCTOR CORPORATION

(888) 535-5207 WWW.MOXIEINDUCTORS.COM

HORIZONTAL COMMON MODE FILTER

MOXIE MOX-LCMC-2621 SERIES

PAGE 1/2

REV. -

DWG#: MOXLCMC2621

ELECTRICAL @ 25°C

MOXIE PART NUMBER	INDUCTANCE mH (MIN)	RATED CURRENT AC (A)	DCR Ω/LINE (MAX)	TEMPERATURE RISE K (MAX)
MOX-LCMC-2621-R535	35.00	0.50	1.75	45.00
MOX-LCMC-2621-R815	15.00	0.80	0.75	50.00
MOX-LCMC-2621-R110	10.00	1.00	0.55	45.00
MOX-LCMC-2621-R145	4.50	1.50	0.24	45.00
MOX-LCMC-2621-R225	2.50	2.00	0.17	50.00
MOX-LCMC-2621-R557	57.00	0.50	1.75	45.00
MOX-LCMC-2621-R824	24.00	0.80	0.75	45.00
MOX-LCMC-2621-R116	16.50	1.00	0.55	45.00
MOX-LCMC-2621-R157	7.00	1.50	0.24	45.00
MOX-LCMC-2621-R240	4.00	2.00	0.17	50.00
MOX-LCMC-2621-R506	60.00	0.50	1.75	45.00
MOX-LCMC-2621-R825	25.00	0.80	0.75	50.00
MOX-LCMC-2621-R117	17.00	1.00	0.55	45.00
MOX-LCMC-2621-R158	8.00	1.50	0.24	45.00
MOX-LCMC-2621-R245	4.50	2.00	0.17	50.00

MOXIE NOTES:

The following MoxiE Inductor Corporation Specification shall be considered Confidential in nature. Each person or persons in receipt of this specification shall not disclose any confidential information in whole or in part without written authorization from MoxiE Inductor Corporation.

- Rated voltage: 250V AC.
- Withstanding voltage: 2400VAC (2sec between lines).
- Insulation resistance: at 500VDC, more than 100M (between lines).
- Inductance tested at 1kHz, 1V.
- Packaging: Tray.
- RoHS Compliant.
- Moisture sensitivity: Level 1.
- RoHS "NL" peak solder rating: 245°C
- Operating temperature range: -40°C to +125°C.
- Storage temperature range: -40°C to +85°C.
- MoxiE Inductor Corporation custom designs are subject to United States copyright and or patent protection(s).
- MoxiE Inductor Corporation specifications are subject to change without notice.
- Tolerances unless otherwise specified: 0-10=±0.15, 10-20=±0.20, 20-40=±0.25, 40-70=±0.30, ≥70=±0.40

MoxiE
INDUCTOR CORPORATION

(888) 535-5207 WWW.MOXIEINDUCTORS.COM

HORIZONTAL COMMON MODE FILTER

MOXIE MOX-LCMC-2621 SERIES

PAGE 2/2

REV. -

DWG#: MOXLCMC2621