

MOX-SLI-5012

MoxiE[®]
INDUCTOR CORPORATION

Surface Mount Ultra Low Profile Shielded Inductors

MoxiE's MOX-SLI-5012 of surface mount shielded inductors are engineered for high current power line applications.

- Low cost.
- Magnetically shielded construction.
- Ultra low profile package.
- Operating temperature: -40°C to +105°C.
- Excellent solderability & resistance to soldering heat.
- RoHS compliant.

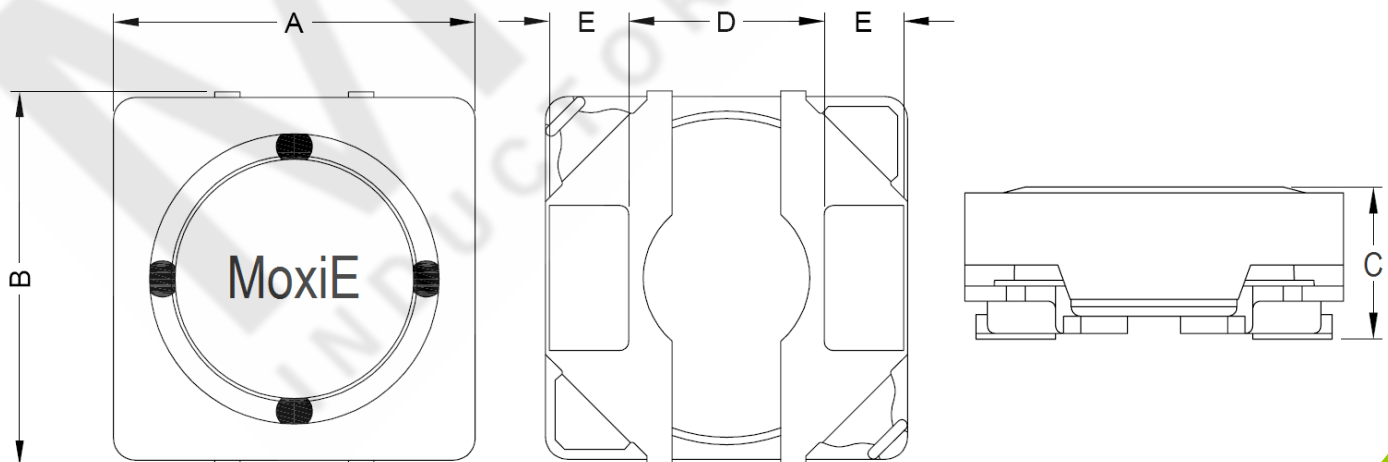


PART NUMBERS

MOXIE PART NUMBER	A	B	C (MAX.)	D (TYP.)	E (TYP.)
MOX-SLI-5012	5.00 ± 0.2	5.00 ± 0.3	1.20	2.70	1.10



MECHANICAL DIMENSIONS





ELECTRICAL SPECIFICATIONS

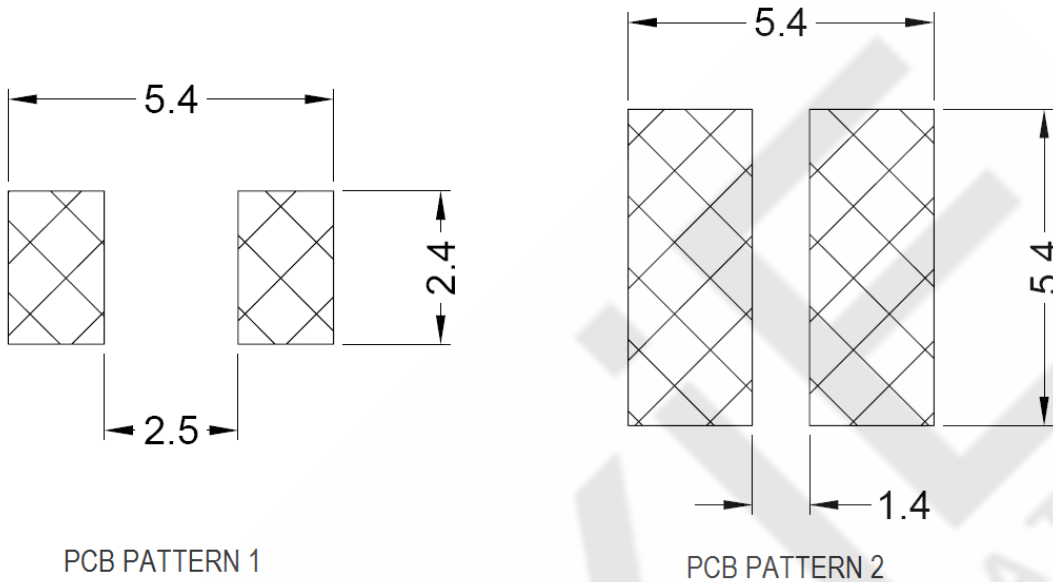
MoxiE Part Number	Inductance (uH)	Test Frequency	RDC (mΩ) ±20%	IDC1 (A)	IDC2 (A)
MOX-SLI-5012-1R0N	1.0±30%	0.1V/100KHz	42.0	2.70	2.40
MOX-SLI-5012-1R5N	1.5±30%	0.1V/100KHz	50.0	2.20	2.10
MOX-SLI-5012-2R2N	2.2±30%	0.1V/100KHz	70.0	1.80	1.75
MOX-SLI-5012-3R3N	3.3±30%	0.1V/100KHz	79.0	1.60	1.55
MOX-SLI-5012-4R7M	4.7±20%	0.1V/100KHz	118.0	1.40	1.35
MOX-SLI-5012-6R8M	6.8±20%	0.1V/100KHz	145.0	1.10	1.20
MOX-SLI-5012-100M	10±20%	0.1V/100KHz	215.0	0.85	1.10
MOX-SLI-5012-150M	15±20%	0.1V/100KHz	315.0	0.75	0.95
MOX-SLI-5012-220M	22±20%	0.1V/100KHz	420.0	0.58	0.75
MOX-SLI-5012-330M	33±20%	0.1V/100KHz	660.0	0.47	0.55
MOX-SLI-5012-470M	47±20%	0.1V/100KHz	1020.0	0.35	0.45

MOXIE ENGINEERING NOTES:

- IDC1: BASED ON INDUCTANCE CHANGE (AL/Lo: <30%) @ AMBIENT TEMPERATURE OF +25°C.
- IDC2: BASED ON TEMPERATURE RISE (ΔT: +40°C TYPICAL)
- MOXIE INDUCTOR CORPORATION CUSTOM INDUCTANCE VALUES AVAILABLE.—CONTACT MOXIE FOR SPECIAL REQUESTS.
- OPERATING TEMPERATURE: -40°C TO +105°C. (INCLUDING SELF TEMPERATURE RISE.)
- RoHS COMPLIANT.
- MOXIE INDUCTOR CORPORATION SPECIFICATIONS ARE SUBJECT TO CHANGE WITHOUT NOTICE.
- MOXIE INDUCTOR CORPORATION CUSTOM DESIGNED PRODUCT(S) ARE SUBJECT TO UNITED STATES PATENT AND OR COPYRIGHT PROTECTION(S).



LANDING PATTERNS



MATERIALS

WIRE	CORE	TERMINAL CLIP	ADHESIVE	INK MARKING
POLYURETHANE ENAMELLED COPPER WIRE	FERRITE	C5191	RoHS EPOXY	70000-00101

MOXIE ENGINEERING NOTES:

- IDC1: BASED ON INDUCTANCE CHANGE ($\Delta L/L_0$: <30%) @ AMBIENT TEMPERATURE OF +25°C.
- IDC2: BASED ON TEMPERATURE RISE (ΔT : +40°C TYPICAL)
- MOXIE INDUCTOR CORPORATION CUSTOM INDUCTANCE VALUES AVAILABLE.—CONTACT MOXIE FOR SPECIAL REQUESTS.
- OPERATING TEMPERATURE: -40°C TO +105°C. (INCLUDING SELF TEMPERATURE RISE.)
- RoHS COMPLIANT.
- MOXIE INDUCTOR CORPORATION SPECIFICATIONS ARE SUBJECT TO CHANGE WITHOUT NOTICE.
- MOXIE INDUCTOR CORPORATION CUSTOM DESIGNED PRODUCT(S) ARE SUBJECT TO UNITED STATES PATENT AND OR COPYRIGHT PROTECTION(S).