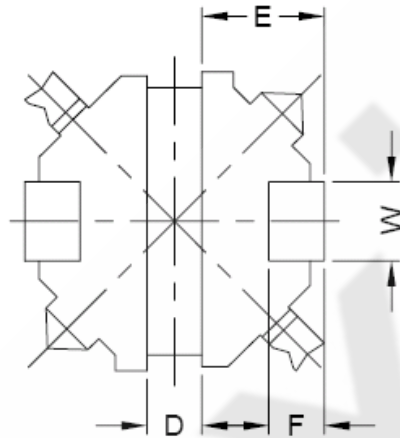
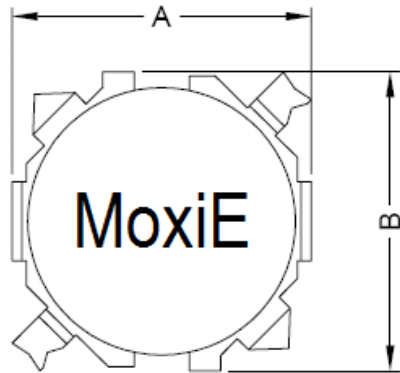
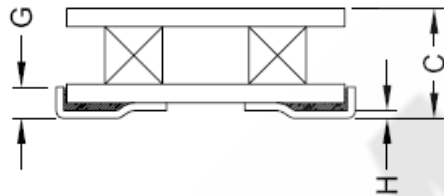
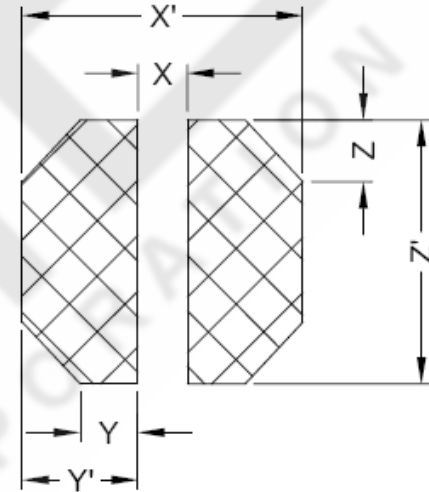


# MECHANICAL



## LANDING PATTERN



A	B	C	D	E	F	G	H
3.00±0.2	3.00±0.2	1.5 Max.	0.80 Max.	1.10 Max.	0.40 Typ.	0.30 Typ.	0.10 Typ.
W	X'	X	Y'	Y	Z'	Z	
1.0 Typ.	3.40±0.1	0.60±0.1	1.40±0.1	0.70±0.1	3.20±0.1	0.75±0.1	

DIMENSIONS IN MM

### MOXIE INDUCTOR CORPORATION

(888)535.5207 WWW.MOXIEINDUCTORS.COM

SHIELDED SMD POWER INDUCTOR FOR POWER LINES

MOXIE PART NUMBER: MOX-SPI-3015 SERIES

PAGE 1/2

REV. A

DWG NUMBER: MOXSP3015

## ELECTRICAL

MoxiE Part Number	Inductance (μH)	Inductance tolerance (%)	Test frequency	DCR (Ω) ±20%	IDC (A) MAX..
MOX-SPI-3015-1R6	1.60	±30	0.3V/100kHz	0.065	1.50
MOX-SPI-3015-2R2	2.20	±30	0.3V/100kHz	0.082	1.30
MOX-SPI-3015-3R3	3.30	±30	0.3V/100kHz	0.110	1.00
MOX-SPI-3015-4R7	4.70	±30	0.3V/100kHz	0.160	0.86
MOX-SPI-3015-6R8	6.80	±30	0.3V/100kHz	0.220	0.80
MOX-SPI-3015-100	10.00	±20	0.3V/100kHz	0.280	0.70
MOX-SPI-3015-220	22.00	±20	0.3V/100kHz	0.080	0.46
MOX-SPI-3015-330	33.00	±20	0.3V/100kHz	0.960	0.40
MOX-SPI-3015-470	47.00	±20	0.3V/100kHz	1.405	0.35

### MOXIE NOTES:

- ELECTRICAL SPECIFICATIONS AT 25°C.
- ROHS COMPLIANT.
- MAGNETICALLY SHIELDED.
- OPERATING TEMPERATURE -40°C TO +105°C.
- STORAGE TEMPERATURE -40°C TO +125°C.
- PACKAGING: 3000 PCS PER REEL.
- TERMINAL MATERIAL: Sn (100%) Sn PLATING.
- MOXIE INDUCTOR CORPORATION SPECIFICATIONS SUBJECT TO CHANGE WITHOUT NOTICE.

### MOXIE INDUCTOR CORPORATION

(888)535.5207 WWW.MOXIEINDUCTORS.COM

SHIELDED SMD POWER INDUCTOR FOR POWER LINES

MOXIE PART NUMBER: MOX-SPI-3015 SERIES

PAGE 2/2

REV. A

DWG NUMBER: MOXSP3015