

MOX-TSMI SERIES



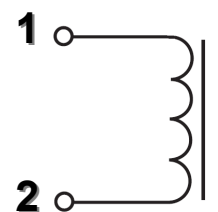
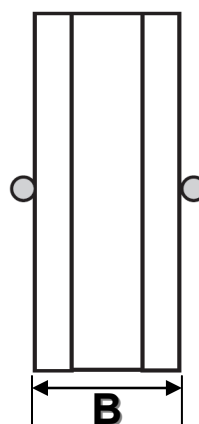
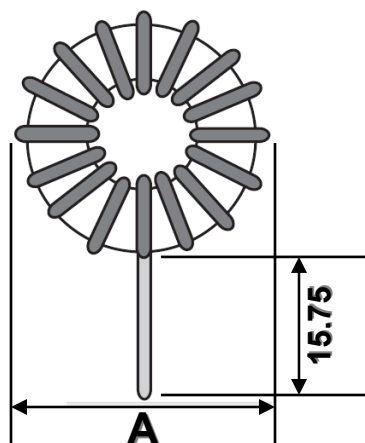
TOROIDAL SWITCH MODE INDUCTORS

- Low cost.
- Low loss core material.
- Frequency range up to 200KHz.
- Available in vertical & horizontal package types.
- Designed for switching power supply applications.
- MoxiE custom designs available.

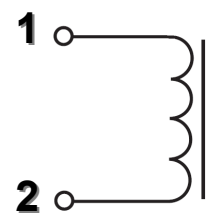
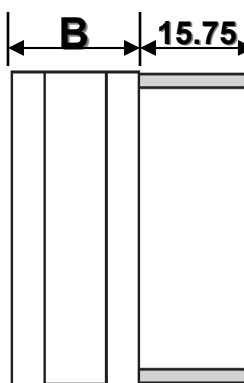
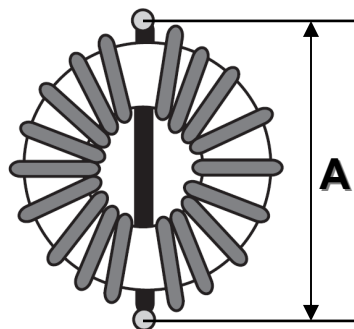


DIMENSIONS (mm)

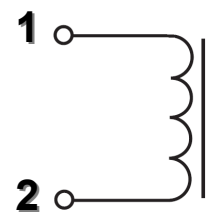
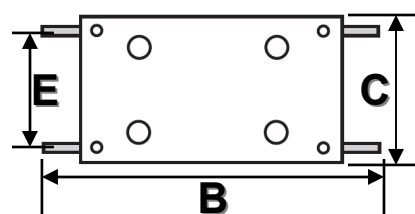
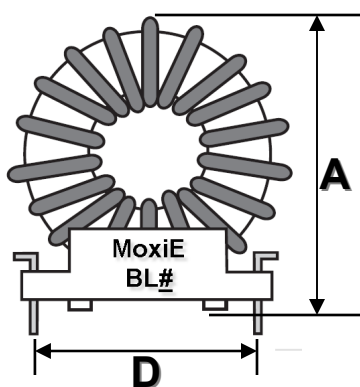
MOXIE MOUNTING CODE	A (MAX.)	B (MAX.)
VL1	15.87	7.62
VL2	21.60	10.80
VL3	24.76	10.80
VL4	24.76	13.97
VL5	31.75	15.24
VL6	38.10	17.78
VL7	44.45	19.05
VL8	52.07	22.86



MOXIE MOUNTING CODE	A (MAX.)	B (MAX.)
HL1	14.48	7.62
HL2	19.81	10.98
HL3	22.86	10.98
HL4	22.86	13.97
HL5	29.72	15.24
HL6	36.83	17.78
HL7	43.18	19.05
HL8	50.20	22.86



MOXIE MOUNTING CODE	A MAX.	B MAX.	C MAX.	D ±0.20	E ±0.20
BL1	17.78	19.82	16.50	15.24	6.35
BL2	24.13	31.75	15.87	20.32	10.16
BL3	27.95	31.75	15.87	20.32	10.16
BL4	34.30	36.32	21.60	22.86	15.24
BL5	39.40	36.32	21.60	22.86	15.24
BL6	46.35	43.18	23.50	30.50	17.78
BL7	53.35	50.80	28.58	38.10	38.10



MOX-TSMI SERIES

TOROIDAL SWITCH MODE INDUCTORS



ELECTRICAL SPECIFICATIONS @25°C

MoxiE Part Number	Package Types	Inductance (µH)	IDC (Amps)	DCR (OHMS) MAX	Inductance @10 KHZ NO DC ±15%	ET op (V-µsec)	DIA. (± 0.08mm) For BL#	Energy Storage
MOX-TSMI-XXX-20-1	BL#, HL#, VL#	20	1.0	.072	20	4	0.50	10
MOX-TSMI-XXX-48-1	BL#, HL#, VL#	48	1.0	.080	57	10	0.50	24
MOX-TSMI-XXX-68-1	BL#, HL#, VL#	68	1.0	.125	73	14	0.50	34
MOX-TSMI-XXX-100-1	BL#, HL#, VL#	100	1.0	.145	111	20	0.50	50
MOX-TSMI-XXX-150-1	BL#, HL#, VL#	150	1.0	.200	170	30	0.50	75
MOX-TSMI-XXX-220-1	BL#, HL#, VL#	220	1.0	.235	247	44	0.50	110
MOX-TSMI-XXX-330-1	BL#, HL#, VL#	330	1.0	.265	388	66	0.50	165
MOX-TSMI-XXX-470-1	BL#, HL#, VL#	470	1.0	.370	564	95	0.50	235
MOX-TSMI-XXX-680-1	BL#, HL#, VL#	680	1.0	.600	850	137	0.50	340
MOX-TSMI-XXX-102-1	BL#, HL#, VL#	1000	1.0	.700	1250	200	0.50	500
MOX-TSMI-XXX-20-3	BL#, HL#, VL#	20	3.0	.031	22	12	0.81	90
MOX-TSMI-XXX-48-3	BL#, HL#, VL#	48	3.0	.060	55	29	0.81	216
MOX-TSMI-XXX-68-3	BL#, HL#, VL#	68	3.0	.075	83	41	0.81	306
MOX-TSMI-XXX-100-3	BL#, HL#, VL#	100	3.0	.095	133	60	0.81	450
MOX-TSMI-XXX-150-3	BL#, HL#, VL#	150	3.0	.118	172	90	0.81	675
MOX-TSMI-XXX-220-3	BL#, HL#, VL#	220	3.0	.140	262	133	0.81	990
MOX-TSMI-XXX-330-3	BL#, HL#, VL#	330	3.0	.180	429	200	0.81	1485
MOX-TSMI-XXX-470-3	BL#, HL#, VL#	470	3.0	.220	595	284	0.81	2115
MOX-TSMI-XXX-680-3	BL#, HL#, VL#	680	3.0	.320	850	410	0.81	3060
MOX-TSMI-XXX-102-3	BL#, HL#, VL#	1000	3.0	.320	1500	604	0.81	4500
MOX-TSMI-XXX-20-5	BL#, HL#, VL#	20	5.0	.020	23	21	1.01	250
MOX-TSMI-XXX-48-5	BL#, HL#, VL#	48	5.0	.040	60	46	1.01	600
MOX-TSMI-XXX-68-5	BL#, HL#, VL#	68	5.0	.042	72	69	1.01	850
MOX-TSMI-XXX-100-5	BL#, HL#, VL#	100	5.0	.058	110	100	1.01	1250
MOX-TSMI-XXX-150-5	BL#, HL#, VL#	150	5.0	.070	182	150	1.01	1875

MOXIE PACKAGE TYPES	ORDER CODE
VERTICAL BASE MOUNT	VB#
HORIZONTAL SELF-LEADED	HL#
VERTICAL SELF-LEADED	VL#



ENGINEERING NOTES

- Operating temperature range: -40°C to +85°C
- Inductance measurement condition: 1kHz, 1V, CH10601
- RDC measurement: CH502BC
- MoxiE Inductor Corporation specifications are subject to change without notice.
- MoxiE Inductor Corporation custom products are subject to United States Copyright and or Patent protection(s).